



ADVISOR
CONSULTANT
SUPPLIER



COMPLETE RANGE OF PRODUCTS PIPES, FITTINGS AND JOINTS



**ROSENDAL
SUPPORT**

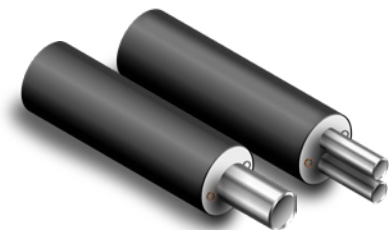
RÄDGIVER · KONSULENT · LEVERANDÖR

Rosendal-Support supplies you with a complete range of products within EN 253 – certified pipes and related fittings and joints. We manage all sorts of tasks – from simple product supplies to complete projects.

PRODUCT PROGRAM

↓
The product program is only a section of our range of products.
See more at
www.rosendal-support.dk

PIPE SYSTEMS



Pre-insulated pipes and fittings

Single pipes

- $\varnothing 26,9 - \varnothing 1016$
- Supply lengths: 6, 12 and 16 meter
Supply length: 18 meter on inquiry
- Insulation series: 1, 2 and 3
- Insulation series: 0 and 4 on inquiry
- Alarm wires Nordic system
- Single pipes can be supplied with alu-barrier

Twin pipes

- $\varnothing 26,9 - \varnothing 273,0$
- Supply lengths: 6, 12 and 16 meter
Supply length: 18 meter on inquiry
- Insulation series: 1, 2 and 3
- Alarm wires Nordic



Fittings

All fittings supplied both as single and twin pipes.
The shown fittings are examples, complete system is supplied.



Alupex 10 bar

- Single pipes supplied in 16, 20, 25 and 32 mm
- Twin pipes supplied in 16, 20, 25 and 32 mm
- Double pipes supplied in all combinations on inquiry
- Insulation series 1, 2 and 3
- Casing slightly corrugated LPDE
- Alupex supplied in 12 meter lengths, single and twin up to 63 mm

Alupex fittings

Complete program of fittings for alupex, press coupling, press weld, press male, compression male, press tee.



PEX-pipe heat 6 bar

- Single pipes 20 – 125 mm
- Twin pipes 20 – 75 mm
- Insulation series 1, 2 and 3
- Casing slightly corrugated LDPE
- PEX-pipes supply lengths: 12 meter in 140 and 160 mm

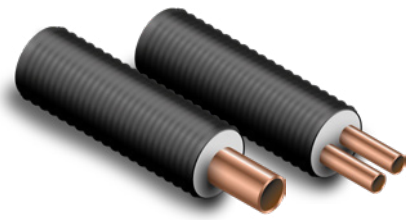
PEX-pipe domestic water 10 bar

- Single pipes 20 – 63 mm
- Double pipes 20 – 63 mm
- Insulation series 1, 2 and 3
- Casing slightly corrugated LDPE

PEX fittings

The fittings program covers a complete range of products in press and compression fittings for 6 and 10 bar PEX. Fittings for 10 bar pipes are certified for domestic water.

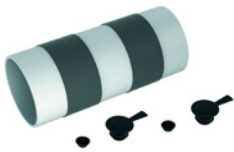




Copper pipes

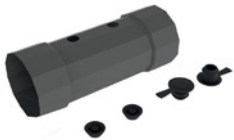
- Copper flex supplied in 18, 22, 28 and 35 mm
- Copper flex supplied in single, twin and double pipes
- Casing slightly corrugated LPDE
- Copper pipes also supplied in 12 meter pipes
- Single pipes 18 – 108 mm
- Twin pipes 18 – 54 mm
- Double pipes in all combinations up to 54 mm

JOINT CONNECTIONS AND ACCESSORIES



Shrinkable joints

- Shrinkable joints supplied as double sealed with integrated mastic and sleeves
- Supplied in dim. 75 – 1200 mm



PEX shrinkable joints

- PEX shrinkable joints supplied with integrated mastic.
- Foam holes sealed with welding plugs.
- Supplied in dim. 90 – 630 mm



Welding joints

- Welding joints supplied as open and closed.
- Dimensions: 90 – 1200 mm



Bending joints

- PEX bend joints supplied with Integrated mastic
- Foam holes sealed with welding plugs.
- Supplied in dim. 90 – 250 mm



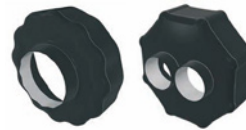
Installation foam

- Installation foam supplied up to:
 - Serie 1 – 1000 mm casing
 - Serie 2 – 800 mm casing
 - Serie 3 – 710 mm casing
- Quantity is based on 2 x 220 mm free pipe ends.
- Bags supplied with pouring nozzle



Installation branches

- Supplied for all dimensions of main pipes
- Supplied for branch dimensions with flex nozzles up to 250 mm
- Supplied with both wrap and for extrusion welding



End-caps

- Supplied for single, twin and double pipes



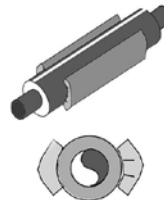
Protection caps

- Rubber protection caps for flexible pipes



Sealing rings

- Supplied in all dimensions



Foam pads

- Supplied in cross-linked PE



Anchoring elements

- Supplied in pressure classes PN 16, 25 and 40 bar



Installation fittings

- Special installation fitting for flex pipes, supplied as joint, bend and branch



Distributor well

- Distributor well can be used profitably at branches and cross branches at flexible pipe systems, both at single and twin

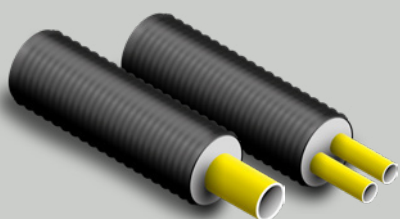
SURVEILLANCE

- The product program for surveillance covers a complete system including detector units as well as units for tracing faults. Supplied both as a firm installation and portable unit.
- Surveillance boxes supplied with no subscription fees.
- Inquire for an offer for an interesting concept.



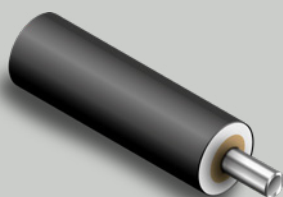
↓
The product program is only a section of our range of products.
See more at
www.rosendal-support.dk

SPECIAL PIPES



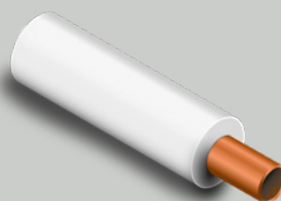
Flexible reinforced PEX-pipes

- Reinforced PEX supplied as 10 and 16 bar
- Dimensions up to 160 mm
- Single and twin pipes



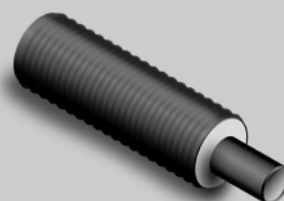
Steam/Hot water pipes

- Supplied up to $\varnothing 323,9$ mm
- Special pipes as steel in steel supplied in all dimensions up to 350 °C



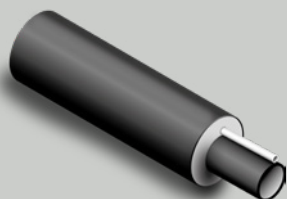
Industry pipes

- Copper pipes with white casings



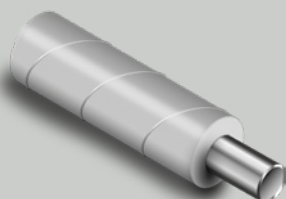
PE pipes

- Flexible PE drink water pipes



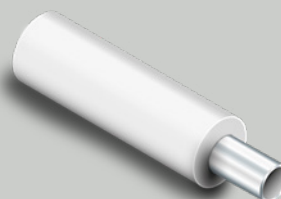
PE pipes

- PE pipes in 12 meter
- Domestic water and drain pipes
- Supplied with PE and CU tracer



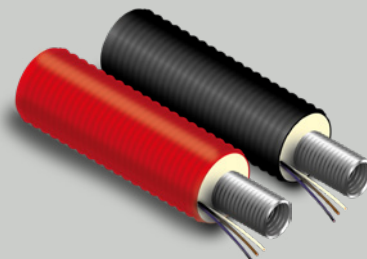
Pipes with galvanised casings

- Pipes supplied with galvanized spiro casings
- Service pipe, all types



Stainless steel pipes

- Stainless steel pipes on demand
- Supplied with both black and white casing



Stainless flexible steel flex

- Supplied up to 144 mm



CuSINUS

- CuSINUS in flex 15 – 28 mm
- CuSINUS in 12 meter 22 – 108 mm
- All pipes up to 54 mm supplied as single and twin
- The pipes are insulated with mineral wool
- Pipes from 35 mm and bigger can be supplied as Sinus bended

*All straight pipes can be supplied with Nordic alarm.
All products are EN standard and the production is EUHP certified.*

**ROSENDAL
SUPPORT**
RÅDGIVER · KONSULENT · LEVERANDØR

📍 Nordre Strandvej 1, Hjørnø · 7130 Juelsminde 📞 tel. +45 4016 2309 ✉ mail: vr@rosendal-support.dk

www.rosendal-support.dk